

# FRESE ANTISCHEGGIA

Jointing Cutters

# 3

**FRESE A FINIRE REGISTRABILI**  
Adjustable Jointing Cutters

Page

54



**FRESE A FINIRE REGISTRABILI MULTICUT**  
Multicut - Adjustable Jointing Cutters

56



**FRESE A FINIRE FISSE**  
Jointing Cutters

58

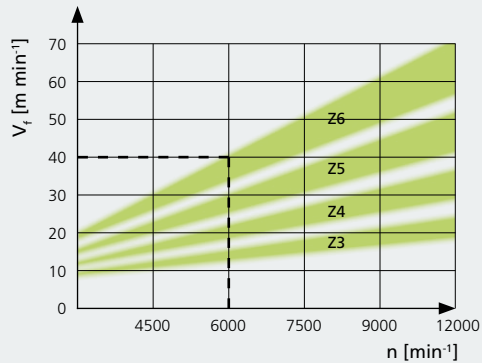


**FRESE A FINIRE FISSE MULTICUT**  
Multicut - Jointing Cutters

62



# 3 FRESE ANTISCHEGGIA Jointing



## PRESTAZIONI:

- OTTIMA
- BUONA
- ACCETTABILE

## PERFORMANCE:

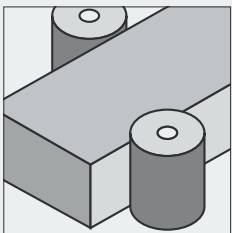
- BEST
- GOOD
- ACCEPTABLE

		FRESE ANTISCHEGGIA A FINIRE REGISTRABILI ADJUSTABLE JOINTING CUTTERS	FRESE ANTISCHEGGIA A FINIRE REGISTRABILI MULTICUT MULTICUT - ADJUSTABLE JOINTING CUT- TERS	FRESE ANTISCHEGGIA A FINIRE FISSE JOINTING CUTTERS	FRESE ANTISCHEGGIA A FINIRE FISSE MULTICUT MULTICUT - JOINTING CUTTERS
LEGNO MASSICCIO	HARDWOOD	●	●	●	●
LAMELLARE	GLUED LAMINATED TIMBER	●●	●●	●●	●●
TRUCIOLARE	CHIPBOARD	●●●	●●●	●●●	●●●
TRUCIOLARE PLACCATO	FACED CHIPBOARD	●●●	●●●	●●●	●●●
TRUCIOLARE MELAMINICO	MELAMINE FACED CHIPBOARD	●●●	●●●	●●●	●●●
TRUCIOLARE RIVESTITO CARTA	PAPER-COVERED CHIPBOARD	●●●	●●●	●●●	●●●
MDF GREZZO	RAW MDF	●●●	●●●	●●●	●●●
MDF PLACCATO	FACED MDF	●●●	●●●	●●●	●●●
MDF MELAMINICO	MELAMINE FACED MDF	●●●	●●●	●●●	●●●
MDF RIVESTITO CARTA	PAPER-FACED MDF	●●●	●●●	●●●	●●●
MULTIPLY	MultiPlex BOARD	●●	●●	●●	●●
HPL, CPL, Trespa	HPL, CPL, Trespa	●●	●●	●●	●●
OSB	OSB	●●	●●	●●	●●
POLIURETANO RIGIDO	HARD POLYURETHANE	●●●	●●●	●●●	●●●
PLASTOMERO	SOFT POLYURETHANE	●●●	●●●	●●●	●●●
P. BASE DI FIBRA DI VETRO	FIBERGLASS BOARD	●●●	●●●	●●●	●●●
CORIAN, VARICOR	CORIAN, VARICOR	●●	●●	●●	●●
PANNELLO CARTONGESSO	PLASTERBOARD	●●●	●●●	●●●	●●●

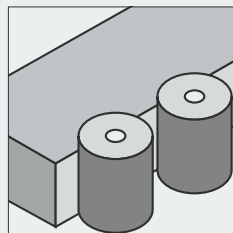


## LAVORAZIONE

Application



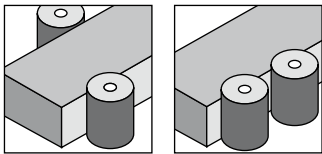
Rifinitura verticale su 2 lati  
2 sides vertical finish



Rifinitura verticale su 1 lato  
1 side double vertical finish

# FRESE A FINIRE REGISTRABILI

Adjustable Jointing Cutters



Utilizzate nella finitura dei pannelli in Truciolare, MDF, rivestiti e non, laminati plastici. Utilizzabili su macchine squadratrici o su bordatrici con gruppi rettifica. Registrabili tramite anelli distanziali in acciaio che permettono di ripristinare il filo tagliente nei punti di maggior usura.

Rotazione a favore o contro avanzamento.

Forma assiale per una finitura migliore anche su pannelli nobilitati.

Scarico ottimizzato per una più veloce evacuazione del truciolo.

Differenti combinazioni per adattarle allo spessore dei materiali.

Used for squaring chipboard, MDF, HDF with or without veneer, paper or plastic coatings.

Suitable for double end tenoners and edgebanders.

Cutter is adjustable by means of steel spacers, allowing to set it to change wearing line.

With or against flow feed rotation.

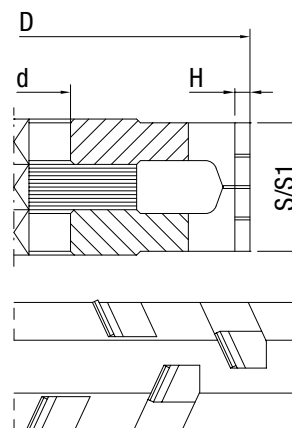
Tips axial angle design for exceptional finishing on faced panels.

Optimized dust flow for perfect evacuation of chips.

Different combinations for board different thickness.

## Type 1

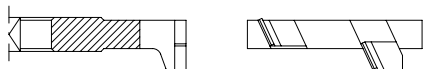
CODE	D	S	S1	d (DKN)	Z	H
0900020	80	22	34	30	3	4
0900024	80	24	38	30	3	4
0900026	80	32	48	30	3	4
0900030	100	22	34	30	3	4
0900034	100	32	48	30	3	4
0900036	125	22	34	30	3	4
0900040	125	22	34	30	4	4
0900044	150	22	34	30	4	5
0900048	180	22	34	35	4	5
0900050	180	22	34	35	6	5
0900056	200	22	34	35	4	5
0900060	200	22	34	35	5	5
0900064	200	22	34	35	6	5
0900068	200	22	34	40	4	5
0900076	200	22	34	40	5	5
0900084	200	22	34	40	6	5



Type "1"

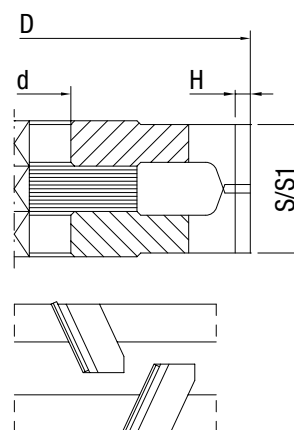
Modulo per teste antischeggia registrabili (vedi pag. 120)

Module for anti-chipping adjust tool heads (vedi pag. 120)



## Type 2

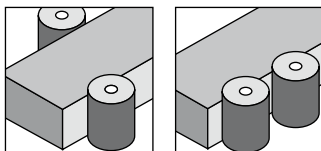
CODE	D	S	S1	d (DKN)	Z	H
0900022	80	22	34	30	3	4
0900028	85	22	34	30	3	4
0900032	100	22	34	30	3	4
0900038	125	22	34	30	3	4
0900042	125	22	34	30	4	4
0900046	150	22	34	30	4	5
0900052	180	22	34	35	4	5
0900054	180	22	34	35	6	5
0900058	200	22	34	35	4	5
0900062	200	22	34	35	5	5
0900066	200	22	34	35	6	5
0900070	200	22	34	40	4	5
0900078	200	22	34	40	5	5
0900086	200	22	34	40	6	5



Type "2"

# FRESE A FINIRE REGISTRABILI MULTICUT

Multicut - Adjustable Jointing Cutters



Utilizzate nella finitura dei pannelli in Truciolare, MDF, rivestiti e non, multistrati laminati plastici. Utilizzabili su macchine squadratrici o su bordatrici con gruppi rettificati. Il Multicut permette un taglio morbido e silenzioso. Ideale per l'incisione e il taglio di bordi particolarmente spessi.

Registrabili tramite anelli distanziali in acciaio che permettono di ripristinare il filo tagliente nei punti di maggior usura.

Rotazione a favore o contro avanzamento.

Forma assiale per una finitura migliore anche su pannelli nobilitati.

Scarico ottimizzato per una più veloce evacuazione del truciolo.

Differenti combinazioni per adattarle allo spessore dei materiali.

Used for squaring chipboard, MDF, HDF and plywood panels with or without veneer, paper or plastic coatings.

Suitable for double end tenoners and edge banders.

Multicut design grants a smooth and low noise cut. Best choice when scoring and cutting of thick borders.

Cutter is adjustable by means of steel spacers, allowing to set it to change wearing line.

With or against flow feed rotation.

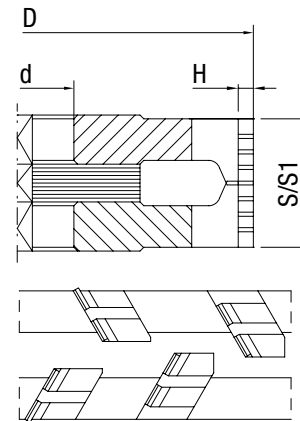
Tips axial angle design for exceptional finishing on faced panels.

Optimized dust flow for perfect evacuation of chips.

Different combinations for board different thickness.

## Type 1

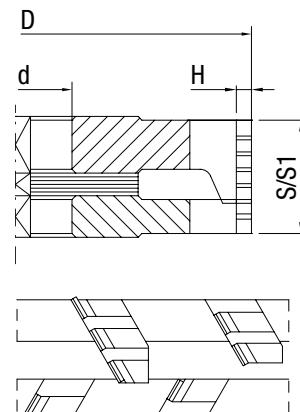
CODE	D	S	S1	d (DKN)	Z	H
0901020	80	22	34	30	3	4
0901024	80	32	48	30	3	4
0901028	85	22	34	30	3	4
0901030	100	22	34	30	3	4
0901034	100	22	34	30	4	4
0901050	180	22	34	35	4	5
0901052	180	22	34	35	6	5
0901060	200	22	34	35	5	5
0901066	200	22	34	35	6	5
0901082	200	22	34	40	5	5
0901088	200	22	34	40	6	5



Type "1"

## Type 2

CODE RH	CODE LH	D	S	S1	d (DKN)	Z	H
0901022	0901023	80	24	30	30	3	4
0901026	0901027	80	32	38	30	3	4
0901032	0901033	100	24	30	30	3	4
0901036	0901037	100	24	30	30	4	4
0901038	0901039	100	46	51	30	3	4
0901040	0901041	125	24	30	30	3	4
0901042	0901043	125	24	30	30	4	4
0901044	0901045	125	24	30	30	5	4
0901046	0901047	125	46	51	30	3	4
0901048	0901049	150	24	30	30	4	5
0901054	0901055	180	24	30	35	4	5
0901056	0901057	180	24	30	35	6	5
0901058	0901059	180	46	51	35	6	5
0901062	0901063	200	24	30	35	5	5
0901064	0901065	200	46	51	35	5	5
0901068	0901069	200	24	30	35	6	5
0901070	0901071	200	46	51	35	6	5
0901072	0901073	200	68	72	35	6	5
0901074	0901075	200	24	30	35	8	5
0901076	0901077	200	46	51	35	8	5
0901078	0901079	200	24	30	35	12	5
0901080	0901081	200	46	51	35	12	5
0901084	0901085	200	24	30	40	5	5
0901086	0901087	200	46	51	40	5	5
0901090	0901091	200	24	30	40	6	5
0901092	0901093	200	46	51	40	6	5
0901094	0901095	200	68	72	40	6	5
0901096	0901097	200	24	30	40	8	5
0901098	0901099	200	46	51	40	8	5
0901100	0901101	200	68	72	40	8	5
0901102	0901103	200	24	30	40	12	5
0901104	0901105	200	46	51	40	12	5
0901106	0901107	200	68	72	40	12	5

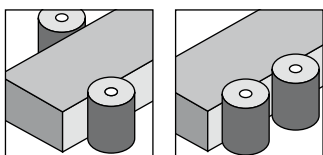


Type "2"



# FRESE A FINIRE FISSE

## Jointing Cutters

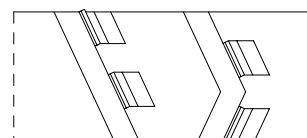
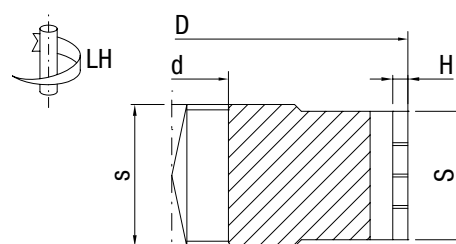


Utilizzate nella finitura dei pannelli in Truciolare, MDF, rivestiti e non, laminati plastici. Utilizzabili su macchine squadratrici o su bordatrici con gruppi rettifica. Ridotta rumorosità grazie alla forma chiusa del corpo e vano di scarico maggiorato per una veloce evacuazione del truciolo. Adatte alle principali macchine sul mercato. Rotazione a favore o contro avanzamento. Forma assiale. Placchette disposte a spirale. Ottima finitura anche su pannelli nobilitati.

Used for squaring chipboard, MDF, HDF with or without veneer, paper or plastic coatings. Suitable for double end tenoners and edge banders. Fits most common machines in the market. With or against flow feed rotation. Axial design. Spiral tips design. Exceptional finishing on faced panels. Improved DFS dust flow reduces noise while boosting performances.

### Type 1

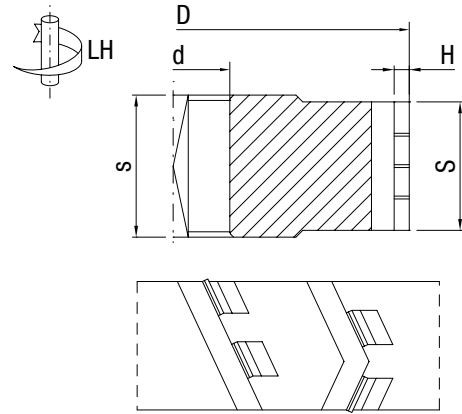
CODE RH	CODE LH	D	S	s	d (DKN)	Z	H	MACHINE
1100032	1100033	80	43	45	30	3	3	-
1100036	1100037	85	43	45	30	3	3	-
1100038	1100039	85	43	45	30	3	4	-
1100042	1100043	100	24	26	30	3	3	-
1100044	1100045	100	24	26	30	3	4	-
1100046	1100047	100	34	37,6	30	2	3	IMA/BRANDT
1100048	1100049	100	34	37,6	30	3	3	IMA/BRANDT
1100050	1100051	100	34	37,6	30	3	4	IMA/BRANDT
1100052	1100053	100	34	37,6	30	4	4	IMA/BRANDT
1100080	1100081	125	24	26	30	3	3	IMA/BRANDT
1100082	1100083	125	24	26	30	3	4	IMA/BRANDT
1100084	1100085	125	24	26	30	4	3	IMA/BRANDT
1100086	1100087	125	24	26	30	4	4	IMA/BRANDT
1100090	1100091	125	34	37,6	30	3	3	IMA/BRANDT
1100092	1100093	125	34	37,6	30	3	4	IMA/BRANDT
1100120	1100121	150	24	26	30	4	5	-
1100122	1100123	150	34	37,6	30	4	5	-
1100126	1100127	180	24	26	35	4	5	-
1100128	1100129	180	24	26	35	6	5	-
1100130	1100131	180	34	37,6	35	4	5	-



Type "1"

## Type 1

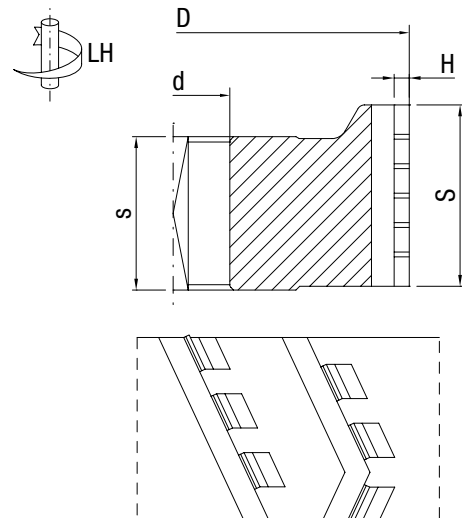
CODE RH	CODE LH	D	S	s	d (DKN)	Z	H	MACHINE
1100132	1100133	180	34	37,6	35	6	5	-
1100146	1100147	200	24	26	35	4	5	-
1100150	1100151	200	24	26	35	6	5	-
1100152	1100153	200	34	37,6	35	4	5	-
1100154	1100155	200	34	37,6	35	6	5	-
1100156	1100157	200	48	50	35	6	5	-
1100164	1100165	200	24	26	40	4	5	-
1100168	1100169	200	24	26	40	6	5	-
1100170	1100171	200	34	37,6	40	4	5	-
1100172	1100173	200	34	37,6	40	6	5	-
1100174	1100175	200	48	50	40	6	5	-
1100180	1100181	220	34	42	35	4	5	IMA



Type "1"

## Type 2

CODE RH	CODE LH	D	S	s	d (DKN)	Z	H	MACHINE
1100020	1100021	60	50	45	20	2	3	EBS
1100022	1100023	60	50	45	20	3	3	EBS
1100024	1100025	60	54	45	20	2	3	POLIMAC
1100026	1100027	60	54	45	20	3	3	POLIMAC
1100034	1100035	80	65	35	30	3	3	-
1100054	1100055	100	43	40,6	30	2	3	IMA/BRANDT
1100056	1100057	100	43	40,6	30	3	3	IMA/BRANDT
1100058	1100059	100	43	40,6	30	3	4	IMA/BRANDT
1100064	1100065	100	48	40,6	30	3	3	IMA/BRANDT
1100066	1100067	100	48	40,6	30	3	4	IMA/BRANDT
1100200	1100201	100	55	40,6	30	3	3	IMA/BRANDT
1100202	1100203	100	55	40,6	30	3	4	IMA/BRANDT
1100068	1100069	100	65	40,6	30	3	4	IMA/BRANDT
1100102	1100103	125	48	40,6	30	3	3	IMA
1100104	1100105	125	48	40,6	30	3	4	IMA
1100112	1100113	125	65	42	30	3	3	IMA
1100114	1100115	125	65	42	30	3	4	IMA
1100116	1100117	125	65	42	30	4	3	IMA
1100118	1100119	125	86	42	30	4	4	IMA
1100134	1100135	180	43	40,6	35	4	5	-
1100140	1100141	180	65	40,6	35	4	5	-
1100142	1100143	180	86	40,6	35	4	5	-
1100158	1100159	200	65	50	35	6	5	-
1100160	1100161	200	86	50	35	6	5	-
1100176	1100177	200	65	50	40	6	5	-
1100178	1100179	200	86	50	40	6	5	-
1100184	1100185	220	65	50	35	4	5	IMA
1100186	1100187	220	86	50	35	4	5	IMA
1100188	1100189	220	110	50	35	4	5	IMA
1100194	1100195	220	65	50	60	4	5	IMA
1100196	1100197	220	86	50	60	4	5	IMA
1100198	1100199	220	110	50	60	4	5	IMA



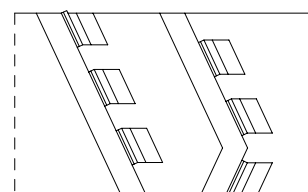
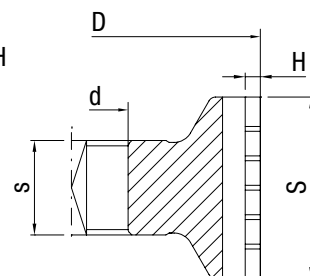
Type "2"

# FRESE A FINIRE FISSE

## Jointing Cutters

### Type 3

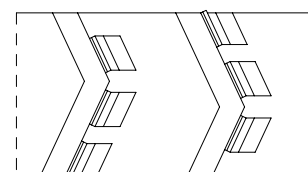
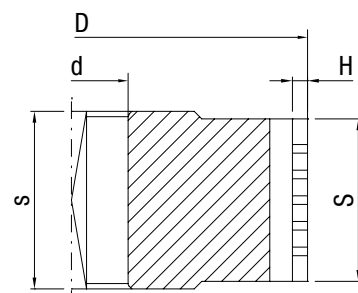
CODE RH	CODE LH	D	S	s	d (DKN)	Z	H	MACHINE
1100028	1100029	80	43	19	20	3	3	-
1100030	1100031	80	43	22	30	3	3	IDM
1100060	1100061	100	48	25	30	2	3	HOLZHER
1100062	1100063	100	48	25	30	2	4	HOLZHER
1100070	1100071	100	65	25	30	2	3	HOLZHER
1100072	1100073	100	65	25	30	3	3	HOLZHER
1100076	1100077	100	86	25	30	3	3	HOLZHER
1100136	1100137	180	48	40,6	35	4	5	-
1100138	1100139	180	48	40,6	35	6	5	-
1100182	1100183	220	48	42	35	4	5	IMA
1100190	1100191	220	34	30	60	4	5	IMA
1100192	1100193	220	48	30	60	4	5	IMA



Type "3"

### Type 4

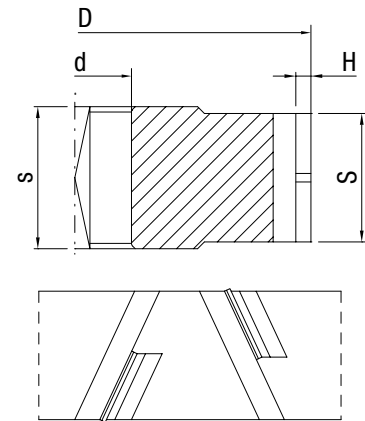
CODE	D	S	s	d (DKN)	Z	H	MACHINE
1100074	100	65	75	30	3	3	AKRON
1100094	125	34	37,6	30	3	3	HOMAG
1100096	125	34	37,6	30	3	4	HOMAG
1100098	125	43	47	30	3	3	BIESSE



Type "4"

## Type 5

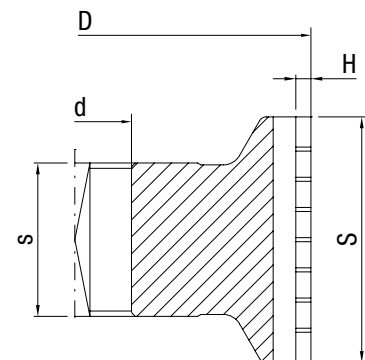
CODE	D	S	s	d (DKN)	Z	H	MACHINE
1100040	100	24	26	30	3	3	-
1100078	125	24	26	30	3	3	IMA/BRANDT
1100088	125	34	37,6	30	3	3	IMA/BRANDT
1100144	200	24	26	35	4	5	-
1100148	200	24	26	35	6	5	-
1100162	200	24	26	40	4	5	-
1100166	200	24	26	40	6	5	-



Type "5"

## Type 6

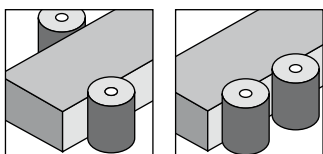
CODE	D	S	s	d (DKN)	Z	H	MACHINE
1100100	125	43	40,6	30	3	3	IMA/HOMAG
1100106	125	65	40,6	30	3	3	HOMAG
1100108	125	65	40,6	30	3	4	HOMAG
1100110	125	65	40,6	30	4	3	HOMAG
1100124	150	48	40,6	30	4	5	-



Type "6"

# FRESE A FINIRE FISSE MULTICUT

## MULTICUT - Jointing Cutters



Utilizzate nella finitura dei pannelli in Truciolare, MDF, rivestiti e non, multistrati, laminati plastici. Utilizzabili su macchine squadratrici o su bordatrici con gruppi rettifica. Il Multicut permette un taglio morbido e silenzioso. Ideale per l'incisione e il taglio di bordi particolarmente spessi.

Adatte alle principali macchine sul mercato.

Rotazione a favore o contro avanzamento.

Forma assiale.

Placchette disposte a spirale.

Ottima finitura anche su pannelli nobilitati.

Ridotta rumorosità grazie alla forma chiusa del corpo.

Used for squaring chipboard, MDF, HDF and plywood panels with or without veneer, paper or plastic coatings.

Suitable for double end tenoners and edge banders.

Fits most common machines in the market.

With or against flow feed rotation.

Axial design.

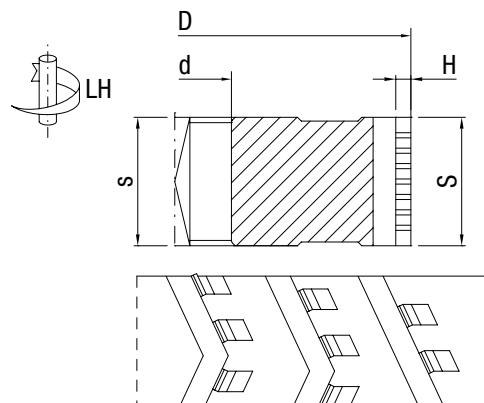
Spiral tips design.

Exceptional finishing on faced panels.

Low noise thanks to closed body design.

### Type 1

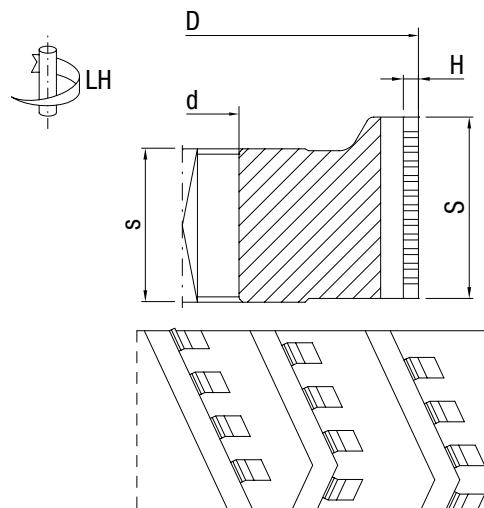
CODE RH	CODE LH	D	S	s	d (DKN)	Z	H	MACHINE
1101020	1101021	100	24	26	30	3	4	-
1101030	1101031	125	24	26	30	3	4	IMA/BRANDT
1101032	1101033	125	24	26	30	4	4	IMA/BRANDT
1101034	1101035	125	34	34	30	3	4	IMA/BRANDT
1101046	1101047	150	34	37,6	30	4	5	-
1101050	1101051	180	48	50	35	4	5	-
1101054	1101055	200	24	26	40	6	5	-
1101056	1101057	200	34	37,6	40	6	5	-
1101060	1101061	200	24	26	35	6	5	-
1101062	1101063	200	34	37,6	35	6	5	-



Type "1"

### Type 2

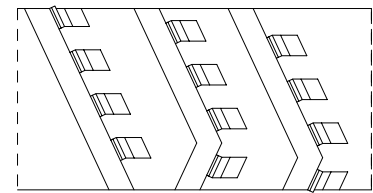
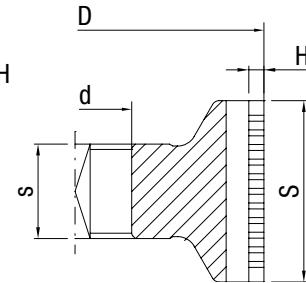
CODE RH	CODE LH	D	S	s	d (DKN)	Z	H	MACHINE
1101024	1101025	100	48	40,6	30	3	4	IMA/BRANDT
1101026	1101027	100	65	40,6	30	3	4	IMA/BRANDT
1101038	1101039	125	48	40,6	30	3	4	IMA
1101044	1101045	125	65	42	30	4	4	IMA
1101052	1101053	180	65	50	35	4	5	-
1101058	1101059	200	65	50	40	6	5	-
1101064	1101065	200	65	50	35	6	5	-
1101066	1101067	220	65	50	35	4	5	IMA
1101068	1101069	220	84	50	35	4	5	IMA
1101070	1101071	220	110	50	35	4	5	IMA



Type "2"

### Type 3

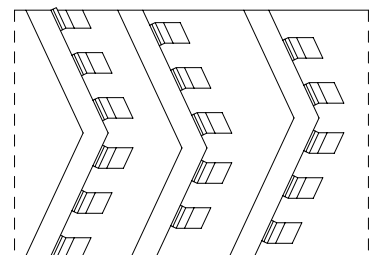
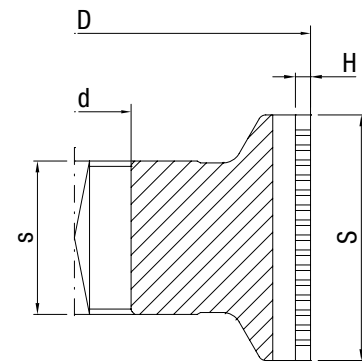
CODE RH	CODE LH	D	S	s	d (DKN)	Z	H	MACHINE
1101022	1101023	100	48	25	30	2	4	HOLZHER
1101028	1101029	100	65	25	30	3	4	HOLZHER
1101096	1101097	125	48	25	30	2	4	-
1101098	1101099	125	65	25	30	3	4	-
1101100	1101101	150	48	25	30	2	4	-
1101102	1101103	150	65	25	30	3	4	-



Type "3"

### Type 4

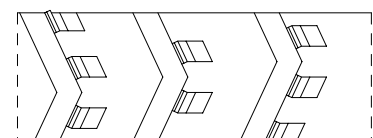
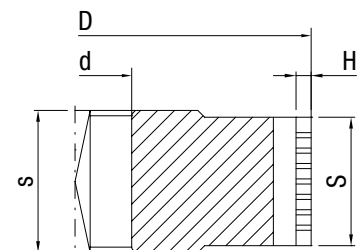
CODE	D	S	s	d (DKN)	Z	H	MACHINE
1101040	125	65	40,6	30	3	4	HOMAG
1101042	125	65	40,6	30	4	4	HOMAG
1101048	150	48	40,6	30	4	5	-
1101072	150	48	40,6	30	3	4	-
1101074	150	65	40,6	30	3	4	-
1101076	150	65	40,6	30	4	4	-
1101078	180	48	40,6	30	3	4	-
1101080	180	48	40,6	30	4	4	-



Type "4"

### Type 5

CODE	D	S	s	d (DKN)	Z	H	MACHINE
1101036	125	34	37,6	30	3	4	HOMAG
1101086	125	34	37,6	30	4	4	HOMAG
1101088	150	34	37,6	30	3	4	-
1101090	150	34	37,6	30	4	4	-
1101092	180	34	37,6	30	3	4	-
1101094	180	34	37,6	30	4	4	-



Type "5"